

INSTALL TIME: 1 - 2 hours

DIFFICULTY LEVEL: 4

TOOLS NEEDED: Philips head screwdriver
10 mm box wrench
12 mm box wrench
Small flat head screwdriver
Hammer
6 mm deep well socket 1/4" drive



1. Begin by removing the lower console tray. There are Phillips head screws by the OBD port and on the other side by the center console locate and remove. (Fig 1 & Fig 2)



Figure 1



Figure 2

2. There are small release tabs by the OBD port and in the center of the tray, press these in while lightly pulling downward. This should mostly remove the tray. (Fig 3 & Fig 4)



Figure 3



Figure 4

3. There is a small tab by the center console. When removing the tray, be sure to pull toward the rear of the vehicle so it comes out. (Fig 5)

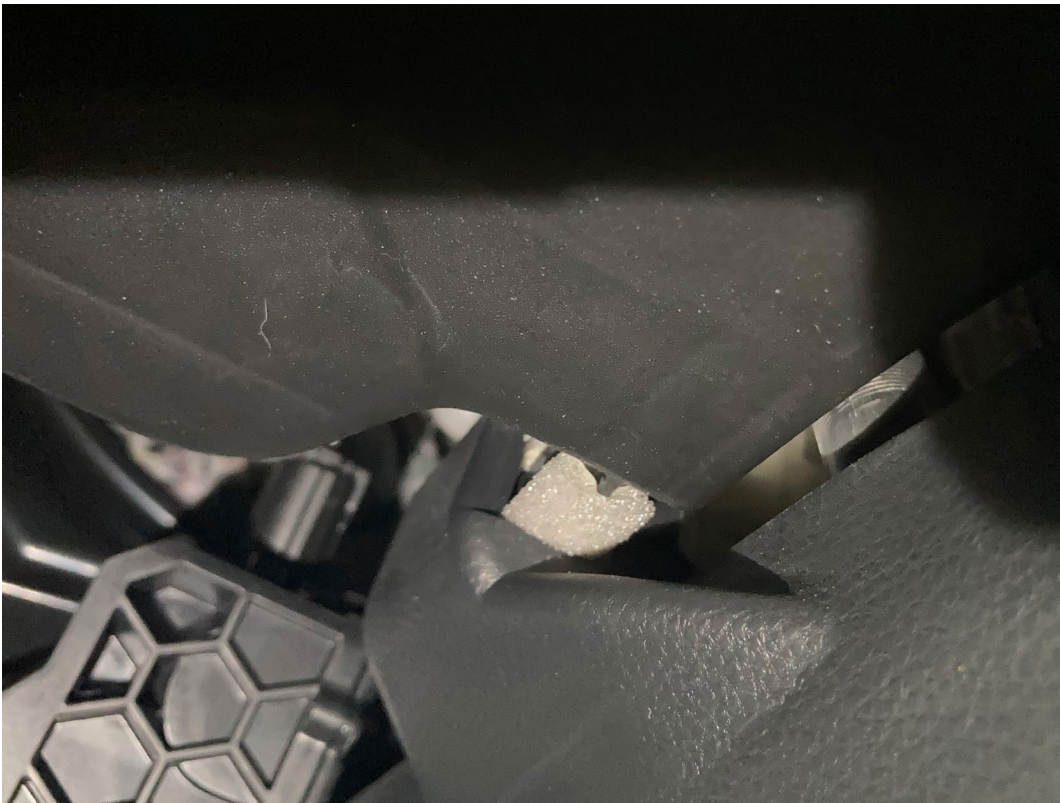


Figure 5

4. Remove the OBD port from the tray. Using a small screw driver, press lightly on one side of the release tabs and pull the connector from the tray.

Now remove the tray, and place to the side. (Fig 6 & Fig 7)



Figure 6



Figure 7

5. Remove the 10 mm flange bolt from this location. It will make it easier to push the body ECU away from the clutch pedal clevis. (Fig 8)



Figure 8

6. Locate the OEM clutch pedal clevis (Fig 9), and begin by removing the cotter key from the clevis pin. The key wraps around the clevis pin, so you will need to pull this portion of the key away from the pin (Fig 10). Once completed remove clevis pin. (Fig 11)



Figure 9



Figure 10



Figure 11

7. Loosen the 6 mm flange nut at the rear of the OEM clutch pedal clevis using the 10 mm box wrench. There is a small cut out on the OEM clevis for a 12 mm spanner wrench, but it's quite difficult to use. You can re-install the clevis pin to provide additional support while loosening the 6 mm flange nut. (Fig 12)

Take your time, and be careful not to break the plastic tabs on the clutch pedal clevis. Once you finally loosen the nut be sure to back it all the way off until it does not turn. Then, using the 10 mm wrench turn it just a little bit (1/8 or 1/4 turn). This is to prevent the nut from spinning when you install the Racer X clutch pedal clevis. (Fig 13)



Figure 12



Figure 13

8. Remove the small 10 mm polymer bushing from the clutch pedal arm. Using a 6 mm socket with 1/4" drive, with the reduced neck side, place this into the clutch arm and lightly tap on the socket with the side of the hammer.

This takes patience and it's a tight fit under the dash, but once the bushing moves, it's possible to remove it by hand. (Fig 14)



Figure 14

9. Install the oil embedded bronze T-bushing. The T-bushing should install the same direction as the OEM piece, so the shoulder will face the LH side. With the supplied grease pack, apply a small portion to this face highlighted and on the lip of the bushing.

TIP: LH and RH are viewed as if you are sitting in the driver seat facing the front of the vehicle. (Fig 15)



Figure 15

10. Install the Racer X clutch pedal clevis. Using the nut begin threading the clevis on. The goal is to roughly match where the OEM clevis was removed. When installation is completed you can adjust if needed. (Fig 16 & Fig 17)



Figure 16



Figure 17

11. Install the spring on the clevis pin and install the clevis pin to the assembly. This, again, is a tight fit and needs to be installed with the shoulder facing the LH side. Once inserted you can push on the clutch pedal to make it a little easier to slide through. (Fig 18 & Fig 19)

TIP: Push the body ECU away from the clevis to make it a little bit easier to install.



Figure 18



Figure 19

12. Install the cotter pin to the clevis assembly. (Fig 20 & Fig 21)



Figure 20



Figure 21

13. Tighten M6 flange nut using 10 mm box wrench. You can support the clevis pedal clevis with a 12 mm box wrench while tightening. Assembly is complete. (Fig 22)

TIP: Before re-installing lower console tray push take your vehicle out for a quick spin and make sure it engages the clutch smoothly. If you hear any additional noise that was not present previously you will need to adjust the clevis.



Figure 22